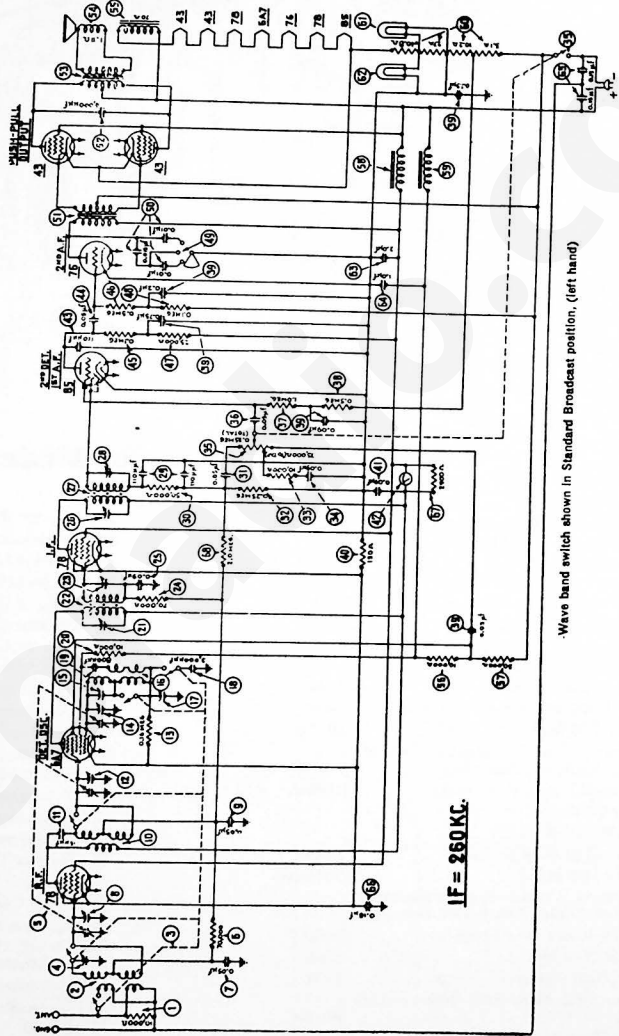


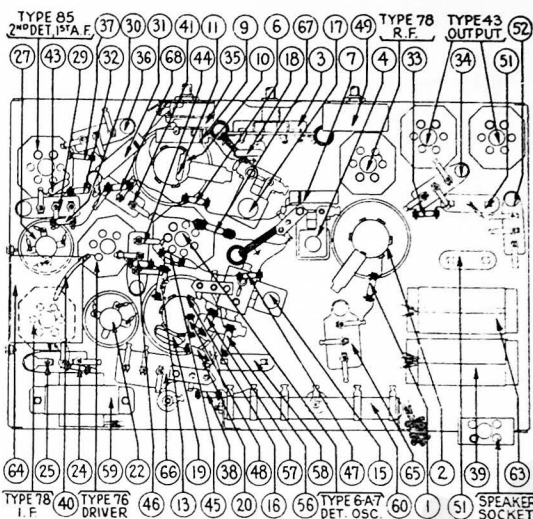
**MODEL 49**  
(D. C.)



**IF = 250 KC.**

Wave band switch shown in Standard Broadcast position, (left hand)

# MODEL 49



## REPLACEMENT PARTS

Nos. on Diagram	Description	Part No.	Nos. on Diagram	Description	Part No.
1	Resistor (10,000 ohms) (Brown-Black-Orange)	33-1000	42	Shadowmeter	45-2042
2	Antenna (R. F.) Transformer	32-1379	43	Condenser (.00011 Mfd. Mica)	30-1006
3	Wave-band Switch	42-1046	44	Condenser (.05 Mfd. Bakelite Block)	3015AX
4	Compensating Condenser (Ant. S. W.)	04000D	45	Resistor (.1 Meg.) (White-White-Orange)	6099
5	Tuning Condenser Assembly	31-1334	46	Resistor (.3 Meg.) (Yellow-White-Yellow)	6097
6	Resistor (70,000 ohms) (Violet-Black-Orange)	33-1115	47	Resistor (25,000 ohms) (Red-Green-Orange)	33-1013
7	Condenser (.05 Mfd. Tubular)	30-4020	48	Resistor (.1 Meg.) (Yellow-White-Yellow)	6099
8	Compensating Condenser (Ant.)	Part of 5	49	Tone Control	30-4043
9	Condenser (.05 Mfd. Tubular)	30-4020	50	Condensers in Tone Control	Part of 49
10	Detector Transformer	32-1427	51	Audio Transformer	32-7211
11	Condenser (.00015 Mica)	30-1030	52	Condenser (.006 Mfd. Bakelite Block)	7825-E
12	Compensating Condenser (Det.)	Part of 5	53	Output Transformer	2550
13	Resistor (160,000 ohms) (Brown-Blue-Yellow)	5331	54	Voice Coil and Cone Assembly	H-10 02625
14	Compensating Condenser (Osc. H. F.)	Part of 5	55	Field Coil and Pot Assembly	K-13 30-3159
15	Compensating Condenser (Osc. S. W.)	31-6016	56	Resistor (10,000 ohms) (Brown-Black-Orange)	02745
16	Oscillator Transformer	32-1428	57	Resistor (50,000 ohms) (Green-Brown-Orange)	4513
17	Compensating Condenser (Osc. L. F.)	04000R	58	Filter Choke	32-7013
18	Condenser (.003 Mfd. Mica)	30-1028	59	Filter Choke	32-7018
19	Condenser (.0008 Mfd. Mica)	6021	60	B. C. Resistor (Wirewound: 5.1-10.2-27.0-10.8 ohms)	33-3128
20	Resistor (10,000 ohms) (Brown-Black-Orange)	4412	61	Pilot Lamp (Dial)	4567
21	Compensating Condenser (1st I. F. Primary)	Part of 22	62	Pilot Lamp (Shadowmeter)	Part of 62
22	First I. F. Transformer	32-1381	63	Condenser (2.0 Mfd. Metal Case)	30-4140
23	Compensating Condenser (1st I. F. Secondary)	Part of 22	64	Condenser (1.0 Mfd. Metal Case)	04357
24	Resistor (70,000 ohms) (Violet-Black-Orange)	33-1115	65	Condenser (.15 Mfd. Twin Bakelite Block)	6287-T
25	Condenser (.09 Mfd. Bakelite Block)	4989N	66	Condenser (.09 Mfd. Twin Bakelite Block)	4989AP
26	Compensating Condenser (2d I. F. Primary)	Part of 27	67	Resistor (2900 ohms) (Red-White-Red)	5309
27	2d I. F. Transformer	32-1424	68	Resistor (2 Meg.) (Red-Black-Green)	33-1025
28	Compensating Condenser (2d I. F. Secondary)	Part of 27		Dial Assembly	31-1205
29	Condenser (.00011 Twin Bakelite Block)	8035E		Dial Scale	27-5046
30	Resistor (10,000 ohms) (Brown-Black-Orange)	33-1000		Knob (large)	27-4051
31	Condenser (.09 Mfd. Bakelite Block)	4989-P		Knob (small)	27-4052
32	Volume Control and On-Off Switch	33-5024		Five Prong Socket	7546
33	Condenser (.05 Mfd. Bakelite Block)	3015-H		Six Prong Socket	7547
34	Resistor (1 Meg.) (Brown-Black-Green)	33-1096		Seven Prong Socket	27-6005
35	Resistor (.5 Meg.) (Yellow-White-Yellow)	6097		Chassis Mtg. Screw	W-1358A
36	Condenser (Metal Case Block) (.2-.75-.25-.05-.09)	30-4144		Chassis Mtg. Foot (Rubber)	27-4116
37	Resistor (200 ohms) Flexible Wire-Wound	7217		Chassis Mtg. Foot Plate	27-7497
38	Condenser (.09 Mfd. Bakelite Block)	4989P		Chassis Mtg. Washer	29-2089
				Speaker Socket	4987
				Cord & Plug Assembly	L-943A